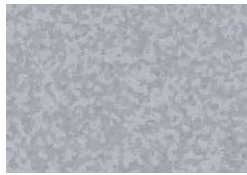
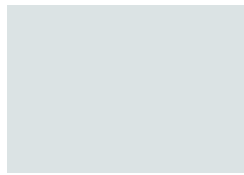


COLOR CHART



ZINCALUME® Plus



Winter White



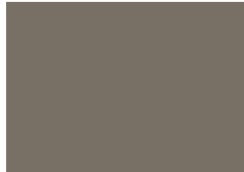
Surf White



Light Stone



Desert Beige



Taupe



Chestnut Brown



Classic Brown



Matte Black



Canyon Red



Rustic Red



Old Town Gray



Old Zinc Gray



Weathered Copper



Slate Gray



Tahoe Blue



Everglade



Denali Green



Cypress Green



Forest Green



Copper Penny*
(Premium Color¹)

Not all colors and profiles are available at all locations. **Please see availability chart on back for details.**

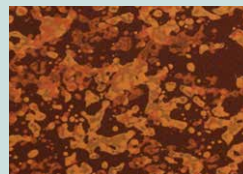
* This coating is batch sensitive and directional in nature.

¹ Subject to upcharge.

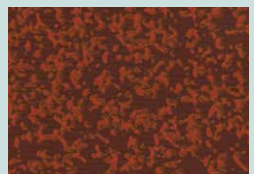
ENVISION THE POSSIBILITIES

REPRESENTATION OF COLORS MAY VARY DUE TO PRINTING LIMITATIONS.

Sample color chips are available upon request. Consult your ASC Building Products representative for more information.



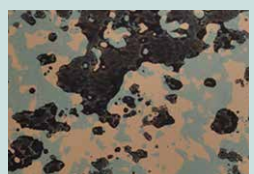
Burnt Rust
(Premium Color¹)



Country Rustic
(Premium Color¹)



Marshland CAMO
(Premium Color¹)



Woodland CAMO
(Premium Color¹)

PREMIUM COLORS
Premium colors are subject to upcharge

Customer Service Centers

Salem OR: 503-390-7174 or 800-272-7023 | Spokane WA: 509-536-4097 or 800-776-8771

www.ascbp.com

PRODUCT DETAILS AND SPECS



KEEPS THE HEAT OUT AND THE COLOR BRILLIANT

Superior color retention and resistance to chalk and fade.

Dura Tech x/ energy saving cool colors reduce the demand for energy.

This premium paint system is ideal for residential applications.



ROBUST ECONOMICAL PAINT SYSTEM

Chalk and fade with ratings similar to a PVDF.

Engineered to resist peeling or cracking for 25 years.

29 gauge steel with a .2-.3 primer thickness and a nominal 1 mil total dry film thickness over a galvanized substrate.



ENERGY SAVING COOL COLORS

Superior performance in harsh environments.

Combines the corrosion protection of ZINCALUME® with a highly durable cool resin technology.

Reduce the demand for energy and provides excellent color retention.



ASC Building Products is Proudly Distributed by:

Color, Gauge, and Paint System	12" Skyline Roofing®	16" Skyline Roofing®	2 1/2" Corrugated	Delta Rib™	Nor-Clad®	Strata Rib®	Delta Rib III	PBR Panel
Dura Tech™ ...	x/		x/		x/	CG25*		nt
Canyon Red					29ga			
Chestnut Brown	26ga	26ga ³	29ga	29ga	29ga	29ga	26ga	
Classic Brown		26ga ³	29ga & 26ga	29ga				
Copper Penny		26ga		29ga ³				
Cypress Green	26ga	26ga		29ga				
Denali Green	26ga	26ga	29ga & 26ga	29ga & 26ga	29ga	26ga		
Desert Beige			29ga & 26ga	29ga	29ga	26ga		
Everglade		26ga		29ga				
Forest Green	26ga	26ga	26ga	29ga	29ga			
Light Stone		26ga ³			29ga	26ga		
Matte Black		26ga ³						
Old Town Gray			29ga & 26ga	29ga	29ga	26ga		
Old Zinc Gray	26ga	26ga						
Rustic Red	26ga	26ga	29ga & 26ga	29ga	29ga			
Slate Gray	26ga	26ga	29ga ¹	29ga				
Surf White				29ga ⁵			26ga	
Tahoe Blue	26ga	26ga	29ga ⁴	29ga & 26ga ²	29ga			
Taupe	26ga			29ga				
Weathered Copper	26ga	26ga		29ga & 26ga			26ga	
Winter White		26ga ⁵	29ga & 26ga	29ga & 26ga	29ga	26ga ³		
ZINCALUME® Plus ⁷		26ga	29ga & 26ga	29ga & 26ga		26ga		
Galvanized G90 Plus						26ga		

Premium Colors (Subject to upcharge)	Available From
Burnt Rust	29ga - Nor-Clad, Delta Rib III from Salem, OR. 29ga - Strata Rib, Nor-Clad from Salt Lake City, UT.
Country Rustic	26ga - 16" Skyline Roofing and Country Rustic Corrugated
Marshland CAMO	29ga - Nor-Clad, Delta Rib III from Salem, OR.
Woodland CAMO	29ga - Nor-Clad, Delta Rib III from Salem, OR.

Product, Gauge and Manufacturing Location	Anchorage, AK.	Sacramento, CA.	Salem, OR.	Spokane, WA.	Salt Lake City, UT.
12" Skyline Roofing			26ga		
16" Skyline Roofing	26ga	26ga	26ga	26ga	26ga
2 1/2" Corrugated		29ga & 26ga			
Delta Rib (24")		29ga & 26ga	29ga	29ga	
Nor-Clad	29ga		29ga & 26ga	29ga	29ga
Strata Rib	29ga	29ga & 26ga		29ga	29ga
Delta Rib III (36")			29ga & 26ga		
PBR Panel		26ga		26ga	

Additional lead times apply on products supplied from a non-local facility.

NOTES:

- (1) Not available from Salem, OR.
- (2) Not available from Sacramento, CA.
- (3) Not available from Anchorage, AK.
- (4) Only available in Delta Rib from Salem, OR. and Spokane, WA.
- (5) Available from Salt Lake City, UT. and Salem, OR. only
- (6) Not available from Sacramento, CA. or Anchorage, AK.
- (7) Unpainted
- (8) G90 only

* ColorGuard 25 with Spectrascape®