

TRILAP® STEEL SIDING

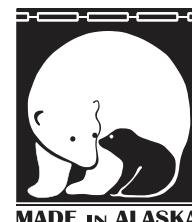
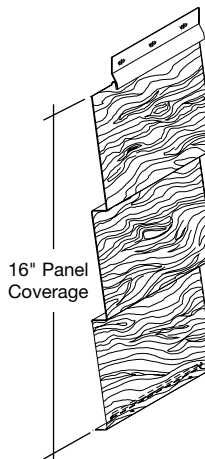
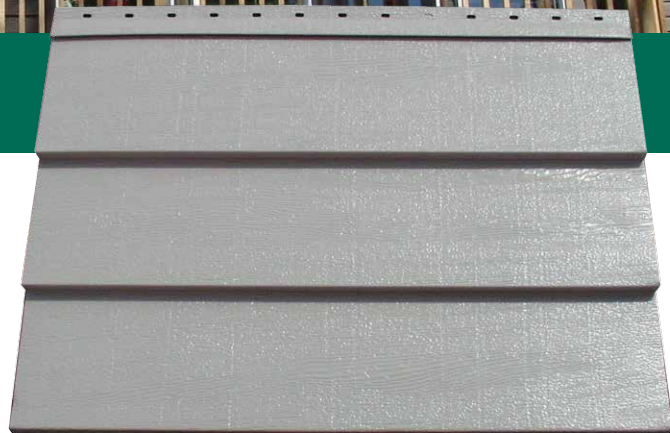


TriLap® Steel Siding

TriLap Steel Siding is a woodgrain embossed siding panel with distinctive shadow lines resembling high-end beveled cedar siding. TriLap Steel Siding offers full 16" coverage in our durable, abrasion-resistant Dura Tech™ zt paint system.

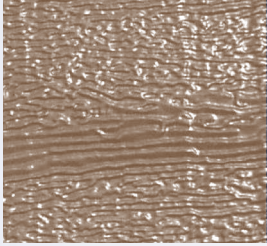
TRILAP STEEL SIDING FEATURES THE KIND OF PERFORMANCE THAT ALASKAN'S CAN RELY ON

- Engineered to outperform wood, aluminum or vinyl in the rugged Alaskan climate.
- Full 16" coverage means fewer panels and less labor to install.
- Woodgrain embossed for the aesthetic beauty of wood, and the durability and low maintenance of steel.
- Standard flashings available to complement the TriLap Steel Siding color palette.
- TriLap Steel Siding is supplied in custom lengths to reduce labor costs and endlaps.
- Available in 26 gauge non-embossed premium Woodgrain prints in a Dura Tech 5000 paint system.
- Limited Lifetime Warranty to maintain its coating without cracking or peeling.

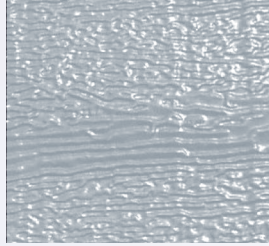


TRILAP® STEEL SIDING

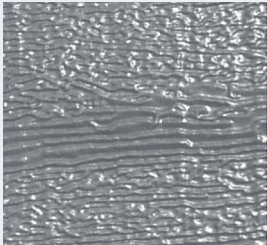
STANDARD COLORS



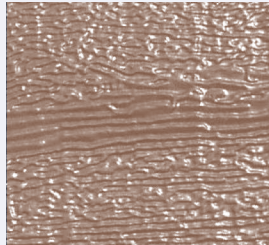
Stony Creek



Silver Fox



Granite Gray



Caribou Tan

Cool DURA TECH^{zt}

The Dura Tech^{zt} Coating System Providing a Lifetime of Durability and Beauty.

- Specially developed for low temperature flexibility.
- Texturing additive to resist abrasion, metal marking and staining.
- TriLap Steel Siding will maintain its long-life beauty with ease.

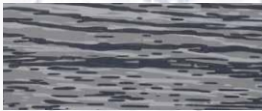
Combined in the **Dura Tech^{zt}** system is our proven ZINCALUME® metallic surface treatment providing a system that promises long-life durability. ZINCALUME is a zinc and aluminum alloy engineered to add strength to the steel while resisting corrosion. Its presence exceeds the service life of traditional galvanized coatings by two times.

Available standard in 29 gauge steel.
Offered as a non-standard product in 26 and 24 gauge steel.

Limited lifetime warranty available upon request

Cool DURA TECH⁵⁰⁰⁰

WOODGRAIN PRINTS



Driftwood (26 gauge)

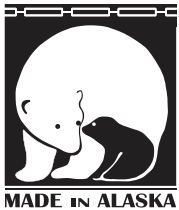


Red Cedar (26 gauge)

Dura Tech coatings combine the corrosion protection of a ZINCALUME® substrate with a highly durable resin formulation and cool pigment technology to provide excellent color retention and reduces the demand for energy.

REPRESENTATION OF COLORS MAY VARY DUE TO PRINTING LIMITATIONS. Sample color chips are available upon request. Consult your ASC Building Products representative for more information.

TRILAP® STEEL SIDING IS ENGINEERED TO OUTPERFORM WOOD, ALUMINUM OR VINYL IN THE RUGGED ALASKAN CLIMATE.



MADE IN ALASKA

For nearly half a century, builders, contractors and architects have depended on us for quality, service and innovation in steel building products from the roof down. The years of testing and know-how are backed by a limited lifetime warranty on TriLap Steel Siding.

With so many benefits, we're confident you'll see the advantages of Klondike Siding. If you have any questions or special service needs, remember, we're easy to find. Look for us right here in Alaska.

Installation Guide with Flashings and Details available at www.ascbp.com



ASC Building Products is Proudly Distributed by: