

# 2½" Corrugated

NEW EXPANDED COVERAGE



~Limited~  
**Lifetime Warranty**  
DURA TECH x/

# 2½" Corrugated

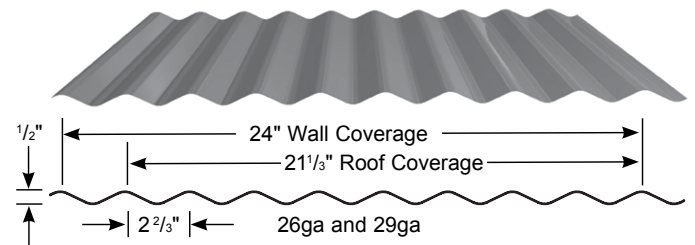
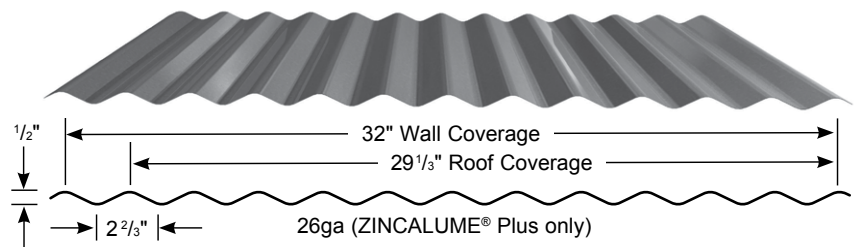
STANDING BY OUR PRODUCTS AND WARRANTIES FOR 40 YEARS

2½" Corrugated is a light gauge, exposed fastener panel ideal for light-commercial, residential roof and walls, agricultural roof, and soffit applications. This versatile panel is a top choice for project designs ranging from country to modern.

### FEATURES AND BENEFITS

- New expanded 32" panel coverage, offering faster installation with less panels and sidelaps. Available only in 26ga ZINCALUME® Plus.
- With an extended lead time, 32" profile available in 22ga and 24ga in our premium Dura Tech™ 5000 paint system. Inquire for color availability and minimum order size.
- 24" panel coverage available in 26ga and 29ga in our Dura Tech x/ paint system.
- Limited lifetime warranty available on residential applications.
- Matching fiberglass skylight panels are available.
- Economical standard and custom trim packages available with every order.
- 2½" Corrugated panel assemblies are Class A Fire Rated when installed on non-combustible deck or framing per IBC or IRC. 2½" Corrugated panel assemblies are also Class A Fire Rated per UL790 when installed in accordance to UL listings.

### NEW EXPANDED COVERAGE



Customer Service Centers

Salem, OR: 503-390-7174 or 800-272-7023 | Spokane, WA: 509-536-4097 or 800-776-8771

www.ascbp.com

# 2 1/2" Corrugated



## Cool DURA TECH XL

**COOL Dura Tech™ xl keeps the heat out and the color brilliant.**

- Superior color retention and resistance to chalk and fade.
- Dura Tech xl energy saving **COOL** colors reduce the demand for energy.

### Color Availability for 2 1/2" Corrugated (24" Coverage only)\*



\*2 1/2" Corrugated (32" Coverage) is available in ZINCALUME® Plus only.

### Product Availability by Gauge and Location

Location	Sacramento California	Salem Oregon	Spokane Washington	Anchorage Alaska	Salt Lake City Utah
Gauge	29 & 26	29 & 26	29 & 26	29 & 26	29 & 26

Manufactured out of Sacramento, CA. Additional lead times apply on products supplied from other facilities listed in chart above.

### Oil Canning

All flat metal surfaces can display waviness commonly referred to as "oil canning." "Oil canning" is an inherent characteristic of steel products, not a defect, and therefore is not a cause for panel rejection.

### REPRESENTATION OF COLORS MAY VARY DUE TO PRINTING LIMITATIONS.

Sample color chips are available upon request. Consult your ASC Building Products representative for more information.

**ASC Building Products' Roofing and Siding is the Building Choice You Can Make with Confidence.**

## SECTION PROPERTIES/INWARD LOAD TABLES

### 2 1/2" Corrugated (32" Coverage)

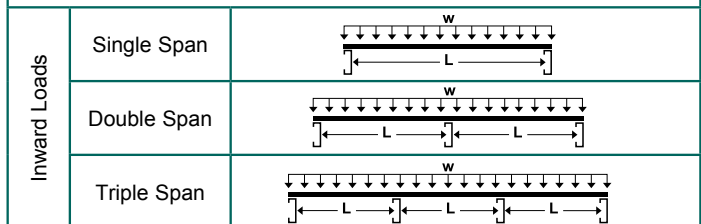
Section Properties								
Gauge	Base Steel Thickness (in)	Yield (ksi)	Yield (ksi)	Wt. (lbs/ft <sup>2</sup> )	I+ (in <sup>4</sup> /ft)	S+ (in <sup>3</sup> /ft)	I- (in <sup>4</sup> /ft)	S- (in <sup>3</sup> /ft)
26	0.0173	80	82	0.83	0.0064	0.0247	0.0064	0.0247

Gauge	Span	Condition	Allowable Inward Loads (lbs/ft <sup>2</sup> ) per Span (ft.-in.)						
			2'-0"	2'-6"	3'-0"	3'-6"	4'-0"	4'-6"	5'-0"
26	Single Span	ASD, W/Ω	148	95	66	48	37	29	24
		L/180	70	36	21	13	9	6	4
	Double Span	ASD, W/Ω	147	94	65	47	37	29	23
		L/180	-	86	50	31	21	15	11
	Triple Span	ASD, W/Ω	184	118	81	60	45	36	29
		L/180	131	67	39	25	16	12	8

### LOADING TABLE LEGEND

W/Ω- Allowable panel strength  
L - Span  
L/180 - Load limited by a deflection of 1/180 of the span  
w - Distributed load



### NOTES: (Specifications subject to change without notice.)

- The information in these tables applies to uniform loads only.
- Upper values based on allowable panel strength.  
Bottom values based on allowable service load deflection of L/180.
- "-" denotes that capacities are limited by panel strength vs. deflection.
- Steel conforms to ASTM A792 (ZINCALUME) 80,000 psi minimum yield.
- Values are based on AISI S100-12.

### 2 1/2" Corrugated (24" Coverage)

Section Properties								
Gauge	Base Steel Thickness (in)	Yield (ksi)	Yield (ksi)	Wt. (lbs/ft <sup>2</sup> )	I+ (in <sup>4</sup> /ft)	S+ (in <sup>3</sup> /ft)	I- (in <sup>4</sup> /ft)	S- (in <sup>3</sup> /ft)
29	0.0139	80	82	0.70	0.0055	0.0209	0.0055	0.0209
26	0.0173	80	82	0.87	0.0070	0.0269	0.0070	0.0269

Gauge	Span	Condition	Allowable Inward Loads (lbs/ft <sup>2</sup> ) per Span (ft.-in.)						
			2'-0"	2'-6"	3'-0"	3'-6"	4'-0"	4'-6"	5'-0"
29	Single Span	ASD, W/Ω	125	80	56	41	31	25	20
		L/180	60	31	18	11	8	5	4
	Double Span	ASD, W/Ω	124	79	55	40	31	24	19
		L/180	-	74	43	27	18	13	9
	Triple Span	ASD, W/Ω	154	99	68	51	39	31	24
		L/180	113	58	34	21	14	10	7

Gauge	Span	Condition	Allowable Inward Loads (lbs/ft <sup>2</sup> ) per Span (ft.-in.)						
			2'-0"	2'-6"	3'-0"	3'-6"	4'-0"	4'-6"	5'-0"
26	Single Span	ASD, W/Ω	161	103	71	52	40	32	26
		L/180	76	39	23	14	10	7	5
	Double Span	ASD, W/Ω	159	101	71	52	39	31	25
		L/180	-	94	55	34	23	16	12
	Triple Span	ASD, W/Ω	199	128	88	65	50	39	31
		L/180	144	74	43	27	18	13	9



ASC Building Products is Proudly Distributed by: