

# STRATA RIB®



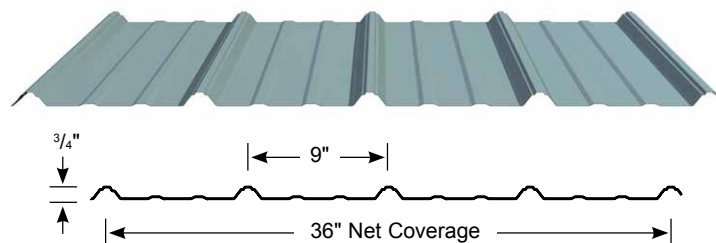
## Strata Rib®

STANDING BY OUR PRODUCTS AND WARRANTIES FOR 40 YEARS

Strata Rib is a light gauge, exposed fastener panel with 36" coverage used in residential roof and wall applications.

### FEATURES AND BENEFITS

- Available in our Dura Tech™ xl paint system or our ZINCALUME® Plus finish for unpainted applications; limited lifetime warranty available on residential applications.
- ColorGuard 25 with Spectrascape® available with a 25 year limited warranty for your agricultural, post frame and recreational building applications.
- Offered as a Liner Panel in a economical polyester paint system. Available in Light Stone and Winter White.
- Weather-resistant lap system with anti-siphon groove provides better weathertightness compared to most other light gauge, exposed fastener panels.
- Available in durable polycarbonate skylight panels.
- Economical standard and custom trim packages available with every order.
- Product is UL Class A Fire Rated when installed in accordance with UL requirements.



# STRATA RIB®



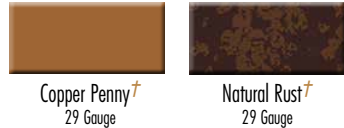
## Cool DURA TECH XL

### COOL Dura Tech xl keeps the heat out and the color brilliant.

- Superior color retention and resistance to chalk and fade.
- Dura Tech xl energy saving **COOL** colors reduce the demand for energy.



### Premium Colors (The premium colors below are subject to upcharge)



Not all facilities produce product in premium colors. Please allow additional lead time for shipment to other service areas.

† This coating is batch sensitive and directional in nature.

### LOAD TABLE

Gauge	Span	Cond.	Allowable Inward Loads (lbs/ft <sup>2</sup> ) per Span (ft.-in.)						
			2'-0"	2'-6"	3'-0"	3'-0"	4'-0"	4'-6"	5'-0"
29	Single Span	W/Ω	101	65	45	33	25	20	16
		L/180	-	56	32	20	14	10	7
	Double Span	W/Ω	84	54	37	27	21	16	13
		L/180	-	-	-	-	-	-	-
Triple Span	W/Ω	95	67	46	34	26	20	16	
	L/180	-	-	-	-	26	18	13	
26	Single Span	W/Ω	124	80	55	41	31	25	20
		L/180	-	69	40	25	17	12	9
	Double Span	W/Ω	105	67	47	35	26	21	17
		L/180	-	-	-	-	-	-	-
Triple Span	W/Ω	130	84	58	43	33	26	21	
	L/180	-	-	-	-	32	22	16	

#### NOTES: (Specifications subject to change without notice.)

- The information in these tables applies to uniform loads only.
- Upper values based on allowable panel strength. Bottom values based on allowable service load deflection of L/180.
- "\*" denotes that capacities are limited by panel strength vs. deflection.
- Steel conforms to ASTM A792 (ZINCALUME) or ASTM A653 80,000 psi minimum yield.
- Values are based on AISI S100-12

## COLORGUARD 25 with Spectrascape

### A robust and economical paint system.

- Resistant to chalk and fade with ratings similar to a PVDF.
- Engineered to resist peeling or cracking for 25 years.



### Product Availability by Gauge and Location

Location	Anchorage Alaska	Sacramento California	Spokane Washington
Dura Tech xl	29ga	29ga & 26ga	29ga
ColorGuard 25	29ga	29ga*	29ga

Additional lead times apply on products supplied from a non-local facility.

\* Only ColorGuard 25 Light Stone 29ga available in Sacramento, CA.

† Not available in Sacramento, CA.

‡ Not available in Sacramento, CA. or Anchorage, AK.

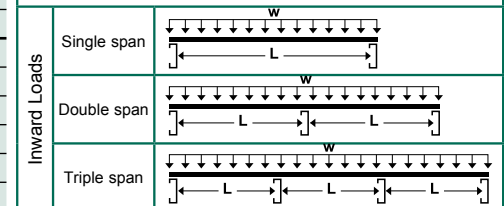
### REPRESENTATION OF COLORS MAY VARY DUE TO PRINTING LIMITATIONS.

Sample color chips are available upon request. Consult your ASC Building Products representative for more information.

Section Properties					
Gauge	Wt. (lbs/ft <sup>2</sup> )	I+ (in <sup>3</sup> /ft)	S+ (in <sup>3</sup> /ft)	I- (in <sup>3</sup> /ft)	S- (in <sup>3</sup> /ft)
29	0.65	0.0100	0.0169	0.0078	0.0143
26	0.81	0.0123	0.0208	0.0099	0.0179

#### LOADING TABLE LEGEND

W/Ω - Allowable panel strength  
L - Span  
L/180 - Load limited by a deflection of 1/180 of the span  
w - Distributed load



ASC Building Products is Proudly Distributed by: